

N3.21 Engine

15.4 kW (21 hp) at 3600 rpm



Kubota engine base

The latest technologies employed by Kubota resulted in a robust design for the N3.21.

The industrial engine base is proven in the most difficult conditions of usage.

Reliability and Comfort

This engine has a proven reliability record and the new marinization has even added to its quality level.

The latest generation heat exchanger improves the temperature regulation, which quality can particularly be appreciated when a boiler is installed. This system further increases the reliability and longevity of the N3.21.

A special coating of the pistons with molybdenum lowers friction and reduces engine vibrations resulting in supplementary comfort concerning the sound levels.

Ease of installation

The N3.21 offers several onboard installation options making it suitable for a vast variety of boats.

Repowering your boat is a breeze with our installation kits which are specifically designed to eliminate the need to modify the frame of your existing engine compartment.

Clean power supply

The N3.21 does not need electronic equipment to comply with the latest environmental requirements on raw materials.

The emission regulations EU-RCD, US-EPA and BSO are easily complied with as the result of the improved combustion and injection system E-TVCS (Environmental-Tri Vortex Combustion System). The particulate emission and smoke have been significantly reduced and the fuel consumption has been dramatically improved.

Main characteristics

- Kubota base engine
- Optimized cooling system
- E-TVCS injection system
- Wide range of equipment
- Ease of repowering

Available transmissions

- TMC40
- TTMC35A (mechanical) angle 7°

Applications

- Sailing boat
- Displacement hulls

Technical specifications

Engine base	Kubota
Rated power (kW/hp)*	15.4 / 21
Rated rpm (rpm)*	3600
Displacement (cm ³ /in ³)	719 / 46.86
Number of cylinders	3, in line
Bore and stroke (mm/in)	67 x 68 / 2.64 x 2.68
Compression ratio	23:1
Combustion system	Indirect (E-TVCS)
Intake	Naturally aspirated
Cooling	Closed cooling with heat exchanger
El. equipment / Alternator	12V / 70A
Instrument panel	A3
Transmission	Mechanical gearbox Sail Drive SD10 ratio 2.52:1
Engine Max. Install. Angle	15°(dynamic)
Certifications	EPA, BSO, SAV, EU-RCD
Dry weight with TMC 40 (kg/lb)	106 / 233,69
Dry weight with Sail Drive (kg/lb)	144 / 317,47
Connections diameter	
Exhaust (mm/in)	40 / 1.57
Fuel (mm/in)	8 / 0.31
Sea Water (mm/in)	20 / 0.79

* At engine flywheel, according to ISO 8665-1



N3.21 Engine

15.4 kW (21 hp) 

Standard equipment

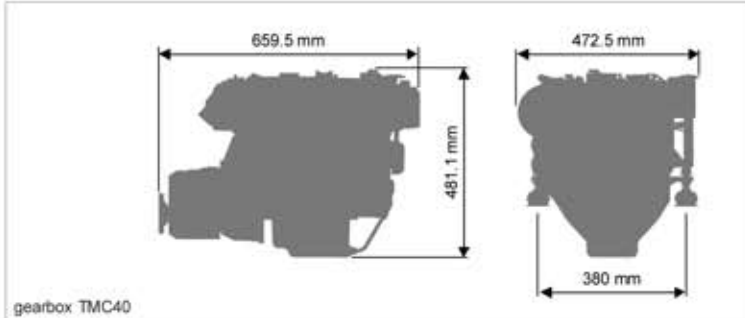
- A3 Instrument panel
 - Tachometer / Hour meter
 - Oil pressure warning light and acoustical alarm
 - Water temperature warning light and acoustical alarm
 - Alternator warning light
 - Glow plug pilot light
 - Ignition start key
- Warranty certificate
- Fresh Water Cooled Exhaust Manifold
- Exhaust elbow
- Closed cooling with heat exchanger
- 4 meter electrical harness
- Fuel filter
- Oil filter
- Mechanical gearbox or Sail Drive
- Owner's manual
- Sea water pump
- Coolant circulating pump
- In line injection pump
- Fuel feed pump
- Oil extraction pump
- Control cables mounting points
- Flexible engine mounts
- Electrical system 12 V
- Thermostat

Optional accessories

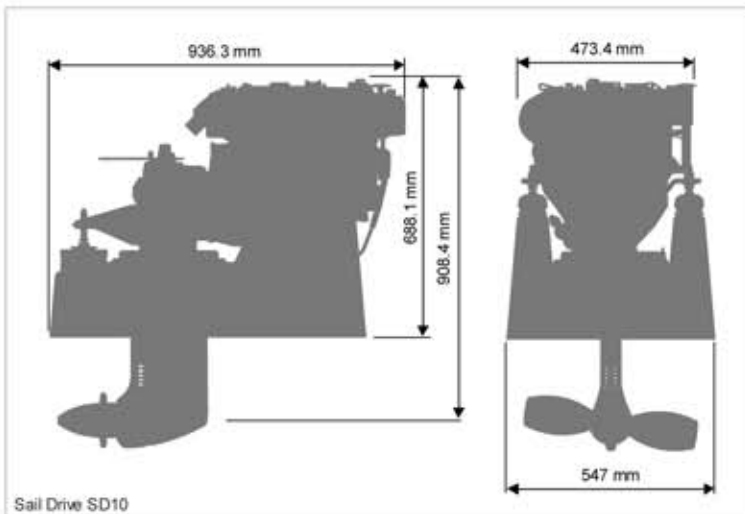
- Keel Cooling
- Two pole electrical system
- PTO Pulley

Optional equipment

- Remote control
- Sea water hoses
- Fuel hoses
- Sea water filter
- Flexible coupling
- Exhaust system



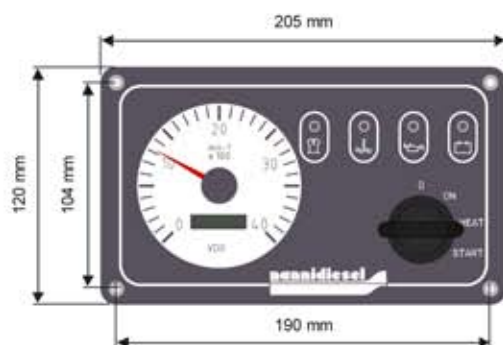
gearbox TMC40



Sail Drive SD10

The shown models are not necessarily identical to current production

A3 panel



nannidiesel
energy in blue

Nanni Industries S.A.S. France

11, Avenue Mariotte-Zone Industrielle

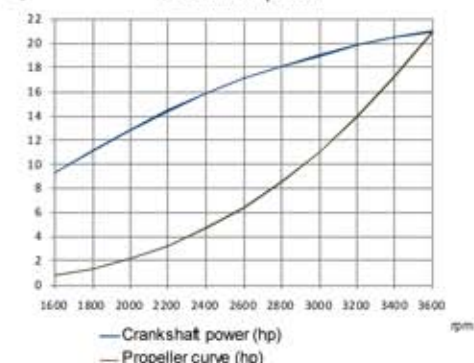
BP 107- 33260 La Teste France

Tel : + 33 (0)5 56 22 30 60

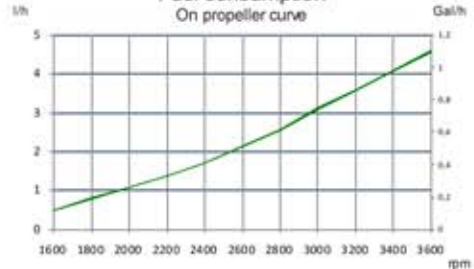
Fax : +33 (0)5 56 22 30 79

www.nannidiesel.com

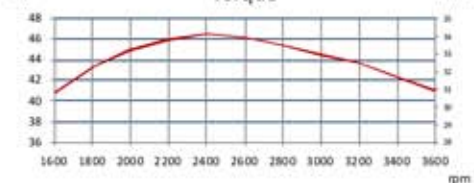
Crankshaft power



Fuel consumption



Torque



Your dealer

Certified ISO
9001 : 2000

